

PERFORM



TE MANIA ANGUS
BREEDING BETTER BEEF

JANUARY 2013



**TUWHARETOA REGENT D145
HAS OUTSTANDING SONS IN
THE AUTUMN SALE LINE UP**

FIRST TIME REGENT SONS WILL BE OFFERED AT TE MANIA ANGUS

Tuwharetoa Regent D145 has outstanding sons in the autumn sale line up

Regent is the highest recorded sire on Breedplan for the Long Fed/CAAB Index and Marbling

Trait Leader four times – He is a larger framed, athletic bull who has been used both through

AI and physically within Te Mania Angus and AI through the Team Te Mania progeny test program.

For breeders looking to give a generational boost to growth, carcass quality and fertility without sacrificing shape, Regent sons will help you get there.

Other outstanding sires include Te Mania Berkley B1, the carcass specialist features many outstanding sons in the sale..

Te Mania Africa A217, one of the most sought after sires in the breed, has sons on

offer with lots of thickness and style.

Te Mania Daiquiri D19, whose sons have been highly sought after, with his first sons offered in last year's autumn sale - 19 sons averaged \$9,868, including the equal top sale price of \$25,000.

Te Mania Emperor E343, the \$91,000 top priced bull in our Autumn sale in 2011, with outstanding sons on offer. Plus sons of the impressive Te Mania Codrington C737 and Te Mania Electrify E353.

TEAM TE MANIA ON LINE COMMERCIAL FEMALE SALE
TUESDAY 5 MARCH 2013 AT 5PM – 100'S OF FEMALES

TE MANIA ANGUS SOUTHERN AUTUMN BULL SALE
WEDNESDAY 6 MARCH 2013 – 125 BULLS





TE MANIA ANGUS
BREEDING BETTER BEEF

REALLY?

Every one of the Te Mania Angus autumn sale bulls is in the top 35 percent of the breed for the Longfed/CAAB \$Index.

The average Longfed/CAAB \$Index for Te Mania Angus sale bulls is \$131.

For the breed it is just \$93.

NO BULL!

Every one of the Te Mania Angus autumn sale bulls is in the top 35 per cent of the breed for Marbling.

The average IMF per cent for Te Mania Angus sale bulls is +2.4.

For the breed it is just +1.0.

- Better Calving Ease
- Better Growth
- Better Fertility
- Better Carcase
- Better \$Index

All sale bulls are independently structurally assessed by Jim Green

All Te Mania Angus cows are joined to strict commercial rules

WHERE DO YOU GET 'EM?

Go to www.temaniacom.au
Catalogue available on-line mid January, hard copies available early February

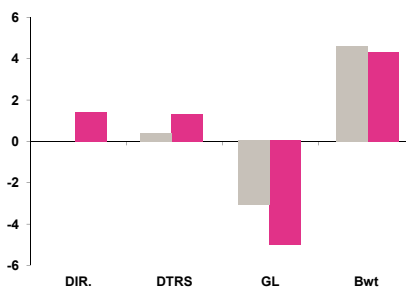


2013 REFERENCE SIRE: TE MANIA EMPEROR E343

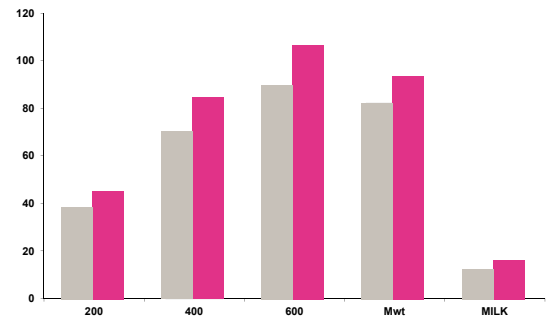
2013 Te Mania Angus Sale Bulls Compared to Angus Breed Average

■ Breed av. 2010 drop
■ Te Mania Bull Sale Av.

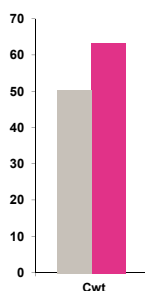
CALVING EASE



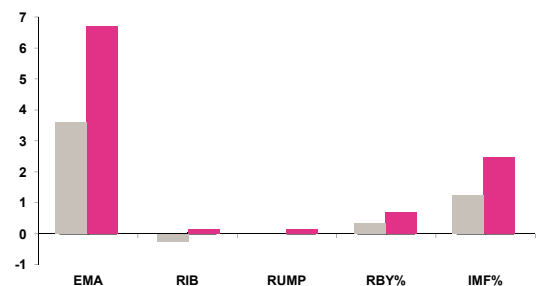
CALVING EASE



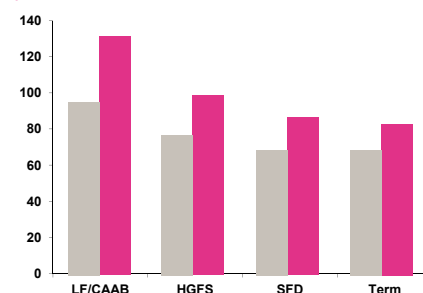
CARCASE WEIGHT



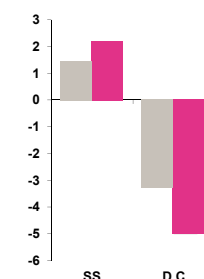
300KG CARCASS



\$INDEX VALUES



FERTILITY



SOUTHERN AUTUMN BULL SALE

2013 REFERENCE SIRE: TE MANIA DAIQUIRI D19



2013 REFERENCE SIRE: TE MANIA CODRINGTON C737



Stud cows for private sale – dams of sale bulls, PTIC, will be on display and available for private sale on sale day. Listing will be available on www.temania.com.au

BREED AVERAGE V TE MANIA SALE BULL AVERAGE

	CALVING EASE				GROWTH & MATERNAL					FERTILITY			300KG CARCASE					INDEX\$			
	DIR.	DTRS	GL	Bwt	200	400	600	Mwt	MILK	SS	D C	Cwt	EMA	RIB	RUMP	RBY%	IMF%	LF/CAAB	HGFS	SFD	Term
Breed av. 2010 drop	0	0.3	-3	4.5	38	70	89	82	12	1.4	-3	50	3.5	-0.1	0	0.3	+1.0	\$93	\$76	\$67	\$67
Te Mania Bull Sale Av.	+1.3	+1.2	-4.9	+4.3	+44.5	+83.8	+105.9	+92.1	+15.6	+2.1	-5.0	+62.2	+6.6	+0.0	+0.1	+0.6	+2.4	\$131.1	\$97.4	\$85.5	\$82.2

BEST PRACTICE FOR THE WORKING BULL

On receiving your new bull

As soon as is practical after arrival he should be introduced and exposed to cattle on your property so that he becomes acclimatized and familiar with his new surroundings. Be conscious that he has left the security of a large mob.

Before putting the bull out

Before mating, cows should be seen cycling in groups with male calves also hanging around. The cows must be on a rising plane of nutrition, before you put the bull out, this ensures they have the optimum chance of cycling.

Bull:Cow ratio

Bulls are most likely to develop problems early in the mating season. Specialist cattle vet David Beggs, maintains that a bull's initial few days of mating can be likened to an athlete who suddenly started running long-distance races with no warm-up – problems were most likely to occur early on.

Under reasonable paddock conditions, a rising 2 year old bull should handle 40 empty cows on his own. An older bull can probably handle slightly more. Please be conscious that bulls following a synchronised program with cows returning over one week rather than three, will NOT decrease your bull requirement.

Observing the bull

A bull is most likely to develop a condition or injury that causes infertility after the joining period has started. It is vital that you monitor your bull at least twice weekly to ensure that he is able to mount cows and that he looks physically normal and is not lame.

Towards the end of the mating period, you should spend some time watching the cows to make sure that large numbers of cows are not cycling. Set aside half an hour one afternoon when the cows are at rest to make sure that most of the cycling activity has stopped, and give yourself some peace of mind! Writing down the cows number at service and observing them 21 days later is the most thorough infertility check.

Reasons for low fertility

Even if a bull manages to serve his cows, there could still be semen problems. Semen needs to be produced at low temperatures and depends on a bull having a good diet – an injured bull that sits down a lot may produce sub-standard semen. And because it takes 50 days for semen to leave the bull after it is produced, once a problem

was detected it is sometimes difficult to determine the cause. It is therefore vital that producers watch their bulls' diets and behaviour carefully.

After mating season

When the season is finished, the bull should be drenched and put away on good feed. Adequate feed will help stop fighting and help the bulls settle into their groups.

7in1 Vaccination

All calves at Te Mania Angus are vaccinated twice as weaners, followed by an annual booster. We recommend bulls be given a 7 in 1 vaccination annually, 2 to 4 weeks prior to joining.

Drench

The bulls are drenched at weaning and periodically according to worm counts. They receive a drench before leaving the property.

Vibriosis

Vibriosis is a common cause of infertility and is transmitted by bulls from one female to another. It is easily prevented by vaccination. Te Mania Angus sale bulls have been given their primer and booster shots. For future years we recommend your bull be given an annual booster 4 to 6 weeks prior to joining.

Pestivirus (BVDV)

The bulls are vaccinated for Pestivirus prior to sale and we recommend annual boosters be given.

PROOF OF PROFIT: HOW THE EBV SYSTEM WORKS

Tom Gubbins and Rob Banks

Much of the change in consumer demand over the last 20 years for the staple meat products is due to the genetic input that the specific industries have achieved.

The supermarket price for pork and chicken products has fallen proportionally to other food products because of the reduction in production costs, driven to a large extent by their genetic improvement.

Examples of these improvements include:

- Progress in the major pig breeding companies world-wide is up to 6 times faster than that being achieved in Angus cattle in Australia,

partly assisted by the rapid generation turnover in pigs, but added to that very high quality recording in the breeding nucleus and use of modern tools like EBVs and Mate Selection (forms of TGRM)

- Poultry breeding continues to be very effective, allowing poultry prices to the consumer to steadily decline in real terms, and poultry to steadily grow its share of the consumer protein "basket"
- Genetic progress in dairy cows is getting considerably faster – up to doubling – as the dairy industry world-wide has swung completely over to using genomic tools to select young bulls. You might say that milk and meat don't compete as food products – and maybe they don't, but dairy cows certainly do compete with beef cattle for land
- Genetic progress in sheep in Australia continues to underpin competitiveness of lamb production, and rapid strides are being made in Merino breeding. The best Merino and dual-purpose breeders are making genetic progress for \$ gross margin per ha around 5 times faster than Angus cattle

Both chicken and pork grow faster and eat less, to produce more than they used to. The increase in growth increases their efficiency as they use less feed in maintenance because they are alive for fewer days. These industries have achieved this huge gain through quantitative genetic selection using their equivalent system to our Estimated Breeding Values. Whereas in the beef industry, whilst we have enjoyed some gains, we are lagging behind these other industries and losing market share as a consequence.

To ensure that beef continues to hold its own with consumers, and remain a competitive land use, it is simply essential to continue making faster progress in efficiency of production (branding rate, growth rate, feed efficiency and health costs) and simultaneously maintain or improve eating quality. All this is quite possible making use of sound practical breeding skills backed by BREEDPLAN and tools that help the breeder get the best out of their investment in recording.

At Te Mania Angus, we have the genetics to make these necessary gains in the beef industry due to our passion for performance recording over more than 40 years and to our progeny testing through Team Te Mania since 1995.

HIGH COUNTRY UPDATE



With James McCormack

Moving the Te Mania Angus embryo donors and recipient herd to Mansfield in Victoria's legendary High Country has all gone very smoothly.

The cows arrived in mid February to an abundance of green feed, which was extraordinary turn of events for them – and us – in what is normally our driest month at Mansfield. I am sure they were thinking they had moved somewhere near the Gold Coast at that stage. However, the winter months gave them a quick dose of reality, frequently waking up to frosts and eventually sloshing around in mud with picturesque Alpine views, complete with a healthy covering of snow.

February and March was spent frantically laying pipes and installing troughs in front of the cow rotation program to protect the dams and provide high quality water. About 10km of pipe has been laid and 29 troughs installed across 400ha.

The cows have been strip grazed through the property, constantly behind hot tapes as a lot of our paddock sizes are too large and fencing at this stage is still just another job on the list. A new stock-handling facility was also installed in March to handle large numbers of cows and calves. Slowly as the year progressed, the main work areas were concreted and a roof built over the crush area.

August and September were dominated by calving, with 375 calves on the ground. This all went smoothly with 65 pc of calves born in the first cycle and no health issues with cows or calves, particularly no grass tetany or scours, which kept things simple. But it was still time consuming with tagging and weighing each calf and drifting off calved cows

to saved grass. The young stock will head to Mortlake at weaning in January to join their contemporaries from the stud.

Embryo collections have gone extremely well for the year and we will have very close to 400 embryos implanted over three presentations before we wrap up for Christmas.

Just in case anyone was wondering, yes, it did finally stop raining here, but unfortunately that was way back in August and I am starting to wonder now if I should have cursed that mud as frequently.

However, dry, wet or sodden this is still a beautiful place to live in and now I wonder if the cows which get downgraded out of the registered herd to the ranks of the recipients are not actually getting upgraded.

James, Emily and family



MERRANG

Te Mania Angus has been very fortunate to secure the iconic Mortlake property Merrang. This beautiful property will become the home of Tom and Lucy and their three children, Edward, Georgie and Sarah.

Merrang has been in the Hood family since 1856 and we look forward to taking on the responsibility of looking after this wonderful property.

Merrang is right next door to the current Mortlake headquarters, so it's business as usual. The bull sale will continue to operate from the woolshed as it has in the past three years and the Gubbins and McFarlane families look forward to seeing you there on March 6th for the annual autumn bull sale.



KING OF THE HILLS

SNOW IN NOVEMBER 2010 AT BERDUE

When your cattle business is all about going up and down hills, very steep hills, every day the easier the job the better life is going to be.

Which is why Berdue Pastoral Company manager Luke van Helvoit has broken his own golden rule. And purchased all his bulls from the one stud.

"I have been at Berdue for the past 15 years and in the past six years alone have tried bulls from four studs, looking for one which can handle our steep, hilly country," Luke said.

"It was not until I tried bulls from Te Mania Angus that I found the solution to my problems," he said.

"We have always been Angus but we have always had problems at the front of our bulls, in their feet, hooves and shoulders.

"But our nine Te Mania Angus bulls have continually out-performed their counterparts."

Running 400 breeding cows, Berdue Pastoral aims for the feedlot market and Luke said the switch to Te Mania Angus had delivered more than sound bulls.

He said they are now able to get away a load of steers aged 12-13 months at their target weight of 450kg – which is better than they had been doing with other bulls.



12 MONTH OLD TE MANIA BLOOD STEERS

"Getting that early load away also saves us selling small steers and/or heifers, so we can now grow them out," Luke added. "Even our heifers and cows sired by Te Mania Angus bulls are more structurally sound and are having far fewer feet and hip issues," he said.

"Any calving problems with our heifers have also basically been eliminated by using Te Mania Angus genetics and our fertility is outstanding – currently about 95-96 pc from an all-natural mating program.

"I have been so impressed by the performance and consistency of Te Mania Angus genetics I've decided to do something that I said I would never do – source bulls from the one stud."

Joining in October and November for a spring calving, Luke said even though things can get

very dry in summer and autumn his Te Mania Angus cows are such good milkers they have no trouble carrying a calf through.

Currently running a multiple mating program rotating bulls every three weeks, Luke says he is now planning to return to single matings because of the reliability of his Te Mania Angus bulls.

"Quite a few people around here are now using Te Mania Angus genetics, and I know they sell well and look good," Luke added.

"I first got a good look at them at a Te Mania Angus field day a few years ago, and it was really impressive to see a mob of 1000 cows," he said.

"One of my wife Kirsten's relatives also uses them and he had a lot of good things to say so we were happy to try them out and even happier with the result."

TEAM TE MANIA ONLINE ONLY COMMERCIAL FEMALE SALE

TUESDAY 5TH MARCH, 2013 AT 5.00PM
ONLINE ONLY - ON AUCTIONS PLUS WEBSITE



**400+ Te Mania
Angus blood
females** available for
inspection on Vendor
properties prior to sale

**Catalogue will be available in
February 2013**

Team Te Mania cattle are some of the most sought after in the lucrative and competitive feedlot trade.

They are part of an established gene pool spread across three states and representing some of the country's most professionally run commercial Angus herds.

They have the data – and a swag of industry awards – to demonstrate their overall excellence and compliance.



**For more information go to
www.temania.com.au or
call Hamish on 03 5264 1606**

**Some of the cattle are recorded
with the Angus Commercial
Register, and have EBVs available.**



STRUCTURING THE BEST-POSSIBLE SCORE AT TE MANIA ANGUS

Jim Green, Beef Xcel

I have been assessing Te Mania Angus cattle since 1994. In those 18 years there has been an intensive structural assessment program running at Te Mania Angus.

Not only is every bull assessed, but each female is assessed prior to joining for the first three years of its breeding life. Donor cows are assessed each year, regardless of age.

The cattle are assessed in line with the Beef Class Structural Assessment System for leg and foot structure. Currently, the annual structural assessment program is as follows:

December: Every yearling bull is assessed. Management groups are observed as in all performance recording, and this data is submitted to Breedplan and genetically analysed, with structure EBVs calculated. This data is presented in the Te Mania Angus bull sale catalogues.

January/ February: At weaning all first-, second- and third-calving cows are assessed for structure including teat size and shape, udder attachment and udder evenness.

May: All bulls in the Spring bull sale team are reassessed so they all have current assessments.

July: All maiden heifers are assessed before calving so the next joining decisions can be made. This data is also genetically analysed using Angus Group Breedplan.

Any animal at any assessment which scores outside the acceptable range is culled – regardless of figures and no questions asked.

Clients and potential clients of Te Mania Angus can be confident they are being provided with a product which is structurally sound due to Te Mania Angus' **dedication to structure.**





**2013 REFERENCE SIRE –
TE MANIA BERKLEY B1**

DATES TO REMEMBER

**BEEF WEEK FIELD DAY
31 JANUARY 2013
MORTLAKE, VICTORIA**

**TEAM TE MANIA ON-LINE
COMMERCIAL FEMALE SALE
5 MARCH 2013**

**TE MANIA ANGUS SOUTHERN
AUTUMN BULL SALE
6 MARCH 2013
MORTLAKE, VICTORIA
STUD COWS FOR PRIVATE SALE**

**NORTHERN SPRING BULL SALE
13 AUGUST 2013
WALGETT, NEW SOUTH WALES**

INVITATION

The Gubbins and McFarlane families in conjunction with Team Te Mania members invite all breeders and their agents to an informal dinner on the eve of the bull sale following the completion of the Team Te Mania online commercial female sale.

For catering purposes, please reply to amanda@temania.com.au if you are able to join us for dinner or call 03 5264 1606

www.temania.com.au

Tom & Lucy Gubbins
T: 03 5599 2988
M: 0429 952197
E: tom@temania.com.au

Hamish & Amanda McFarlane
T: 03 5264 1606
F: 03 5264 1407
M: 0427 641606
E: hamish@temania.com.au

Andrew & Mary Gubbins
T: 03 5254 2233
M: 0488 542323
E: andrewmary@temania.com.au



TE MANIA ANGUS
BREEDING BETTER BEEF

facebook

twitter